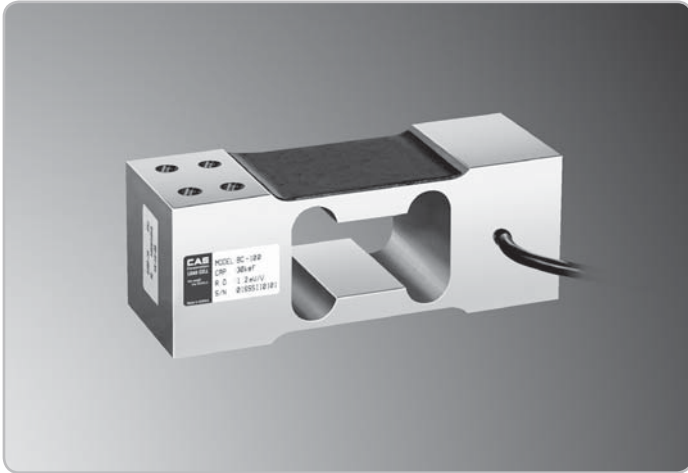


BC

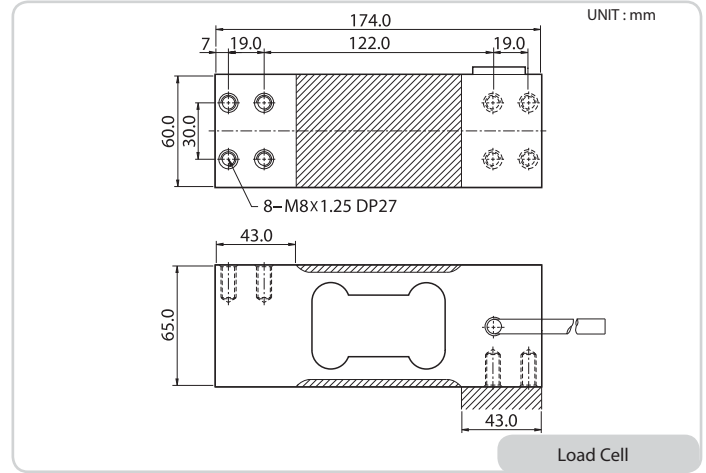
Single Point Load Cell, 30kgf-150kgf



LOAD CELL



DIMENSION



FEATURES

- Low cost
- Off center compensated
- Protection Class IP65

SPECIFICATION

Max. Capacity (Rated Load)	kgf	30, 60, 100, 150
Rated Output	mV / V	1.2 (Approx)
Zero Balance	mV / V	0.0 ± 0.06
Accuracy Class	-	-
Non-Linearity	% R.O.	0.03
Hysteresis	% R.O.	0.03
Combined Error	% R.O.	0.03
Repeatability	% R.O.	0.01
Creep for 30min.	% R.O.	0.03
Return for 30min.	% R.O.	0.03
Resolution	-	≤ 1/3000
Division	mV / V	0.0004
Temperature Effect on	-	-
Zero Value	% / 10	0.028
Output Value	% / 10	0.015
Excitation	-	-
Recommended	V	10
Maximum	V	15
Resistance	-	-
Input	Ω	420 ± 20
Output	Ω	350 ± 3.5
Insulation	MΩ	>2000
Compensated Temperature Range		-10 to +40
Operating Temperature Range		-20 to +70
Material & Plate	-	Anodized Aluminum
Cable Specification	-	ø5 x 4p x 1.365M (PVC)
Safety Overload	% R.L.	150% R.L.
Platform Size	mm	400 x 600