

SBA SERIES



S Beam - Load Cell

50 kg / 100 kg

200 kg / 500 kg

1t / 2t / 3t / 5t



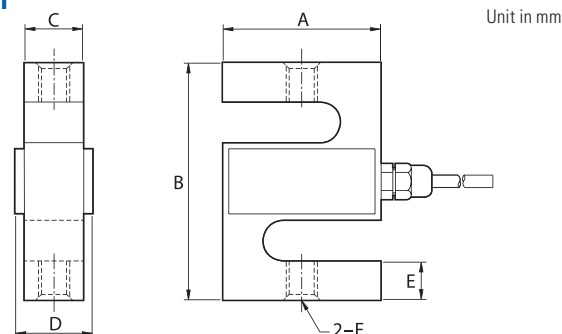
- Nickel plated steel
- Protection class IP65
- OIML R60 Cert.
- Tension Type Load Cell



Technical Specifications

Max Capacity (rated load)	kgf	50kg, 100kg, 200kg, 500 kg, 1t, 2t, 3t, 5t
Rated Output	mV / V	3.0 ± 0.3
Zero Balance	mV / V	0.0 ± 0.03
Accuracy Class	-	C3
Combined Error	% R.O.	0.02
Repeatability	% R.O.	0.01
Creep for 30min.	% R.O.	0.017
Resolution	-	≤1/5000
Division	mV/V	0.0004
Temperature Effect on - Zero Value	%/10 °C	0.014
Temperature Effect on - Output Value	%/10 °C	0.011
Excitation - Recommended	V	10
Excitation - Maximum	V	15
Resistance - Input	Ω	400 ± 25
Resistance - Output	Ω	350 ± 3.5
Resistance - Insulation	MΩ	> 2000
Compensated Temperature Range	°C	-10 ~ +40
Operating Temperature Range	°C	-30 ~ +80
Safety Overload	% R.L	150%
Cable Specification	-	ø5.4 x 4p x 3M (Urethane - Jacket)

Dimension

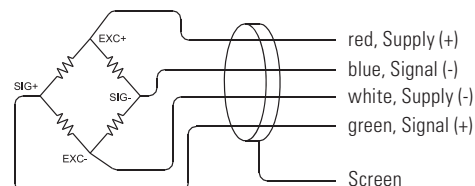


Capacity	A	B	C	D	E	F
25kg						
50kg	50,8	63,5	12,7	20	10,3	M6 × 1,0
100kg						
200kg	51	76	19	27	12,6	M12 × 1,75
500kg						
1t	51	76	25,4	33	12,6	M12 × 1,75
2t	77	108	25,4	33	19	M18 × 1,5
3t						
5t	77	108	25,4	33	19,5	M18 × 1,5

Options

- Rod End
M6 × 1.0 for
50kg to 100kg
- Rod End
M12 × 1.75
for 200kg to 1t
- Rod End
M18 × 1.5
for 1t to 2t

Strain Gauge Connection



UNIT 8, NORTHLINK, 459 TUFNELL ROAD
BANYO QLD 4014, AUSTRALIA

TEL: +61 (0)7 3267 7767 FAX: +61 (0)7 32 67 1818

EMAIL: sales@cassscale.com.au

<http://www.cassscale.com.au>

Specifications are subject to change for improvement without prior notice.